



6.8 / 11 ML

CARICHE > LOADS
CHARGES > KARTUSCHEN

VERDE > GREEN > VERT > GRÜN



GIALLO > YELLOW > JAUNE > GELB



ROSSO > RED > ROUGE > ROT



> Omologazioni > Approval > Homologation > Zulassung





Cartucce omologate CIP
Loads approved CIP
Charges omologuees CIP
kartuschen zugelast CIP

> Dati tecnici > Technical data > Données techniques > Technische Angaben

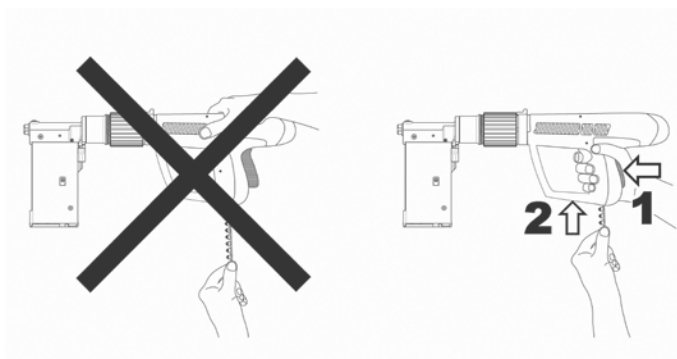
Anche per > Suitable for > Aussi pour > Auch für

BOSS-60A, BOSS-60B
BOSS-90A, BOSS-80B
BOSS-2000



	CODICE CODE	ARTICOLO ITEM	BOSS-6000	BOSS 8000	BOSS - 6000 + M 35	BOSS 3500	
		6,8/11-ML	Ø 8-9	Ø 8-9	caricatore magazine	Ø 8-9	Nr.
	471001	6,8/11-ML verde > green > vert > Grün					100
	471002	6,8/11-ML giallo > yellow > jaune > Gelb					100
	471004	6,8/11-ML rosso > red > rouge > Rot					100

BOSS-6000
BOSS-8000

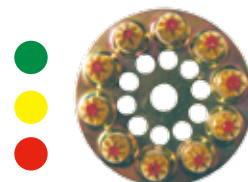







6.3 / 10-S

CARICHE > LOADS
CHARGES > KARTUSCHEN

VERDE > GREEN > VERT > GRÜN
GIALLO > YELLOW > JAUNE > GELB
ROSSO > RED > ROUGE > ROT



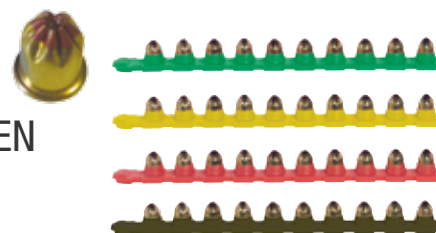
> **Dati tecnici** > Technical data > Données techniques > Technische Angaben


	CODICE CODE	ARTICOLO ITEM	
			Nr.
	430001	6,3/10-S verde > green > vert > Grün	100
	430002	6,3/10-S giallo > yellow > jaune > Gelb	100
	430004	6,3/10-S rosso > red > rouge > Rot	100

Da non usare per chiodatrici Bossong
Do not use for Bossong tools
Non pour Bossong Pisto
Nicht für Gerät Bossong

6.8 / 11-A

CARICHE > LOADS
CHARGES > KARTUSCHEN



	CODICE CODE	ARTICOLO ITEM	BOSS-3000 A	BOSS 108 A2	BOSS 128 F	
	6,8/11-A	caricatore > magazine				Nr.
	470001	6,8/11-A verde > green > vert > Grün				100
	470002	6,8/11-A giallo > yellow > jaune > Gelb				100
	470004	6,8/11-A rosso > red > rouge > Rot				100
	470006	6,8/11-A nero > black > noir > Schwarz				100
	6,8/11					Nr.
	468001	6,8/11 verde > green > vert > Grün				100
	468002	6,8/11 giallo > yellow > jaune > Gelb				100
	468004	6,8/11 rosso > red > rouge > Rot				100
	468006	6,8/11 nero > black > noir > Schwarz				100